



BESTricc

**BEDSIDE SONOGRAPHY TRAINING IN
CRITICAL CARE**



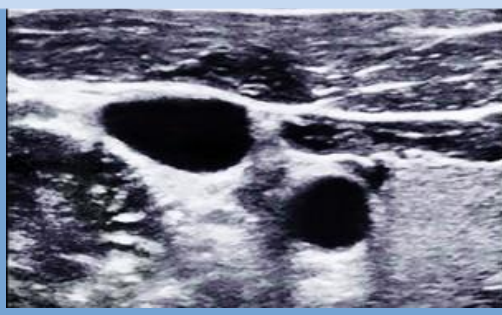
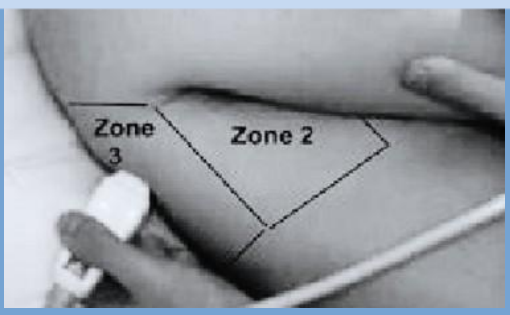
B E D S I D E

ULTRASON

C **RITICAL**
ARE



G
R
A
P
H
Y



The Department of Critical Care Medicine, St. John's Medical College Hospital invites you all to a 2 day comprehensive critical care Ultrasonography workshop.

Come be a part of the paradigm shift that has revolutionized assessment, diagnosis & management of the critically ill using ultrasonography.

DATE & VENUE

22nd & 23rd MARCH 2024

8:30AM – 5.00PM

**DEPT OF CRITICAL CARE MEDICINE.
FIRST FLOOR, SILVER JUBILEE BLOCK
ST. JOHN'S MEDICAL COLLEGE
HOSPITAL, SARJAPURA ROAD
BENGALURU – KARNATAKA**

WORKSHOP HIGHLIGHTS

- Holistic learning of USG/ECHO to aid with day to day management of critically ill
- Bedside teaching by trained faculty with hands on training
 - Interactive case scenarios

REGISTRATION DETAILS

REGISTRATION FEE : RS 5000 + 18% GST

REGISTRATIONS LIMITED TO 30 PARTICIPANTS

FOR ONLINE REGISTRATION & TRANSACTION DETAILS, VISIT
https://www.stjohns.in/Events_inner.php

LAST DATE OF REGISTRATION: 17th March 2024

APPLIED FOR 4 KMC CME CREDIT HOURS

Accommodations available on campus at ANNEXE III (Kindly pay directly at ANNEXE 3)
Tariff per day: Non AC Single Room- 840/- | Non AC Double Room- 1120/-
AC Single Room – 1680/- AC Double Room – 2240/-

CONTACT:

Mrs. Veena Kumari (ICU Secretary)
1st Floor ICU, Silver Jubilee Block
St. John's Hospital, Sarjapur Road
Bengaluru- 560 034
Ph: 080- 2206 5334

Email: ccmstjohns@gmail.com



BESTriCC - DAY 1 (22/03/2024)**TOPICS**

Basic principles of USG: Understanding your machine- Knobs & Probes
 Introduction to Echocardiography- Basic views
 Venous USG at point of care, VexUS
 FAST/eFAST

Tea Break

Principles of Lung USG
 How to assess diaphragmatic dysfunction with USG

Workstation 1**Lunch****USG in Respiratory disease and Neurocritical Care**

Alveolar diseases	USG in Pneumonia, ARDS & Pulmonary edema
Pleural & Airway diseases	Pleural effusion, Pneumothorax, COPD & Asthma
How to get a window to brain?	Transcranial doppler
Optic nerve ultrasound	Eye a window to CNS

Tea Break**Workstation 2****BESTriCC - DAY 2 (23/03/2024)****TOPICS****Echocardiography**

Doppler- Basic principles
 Assessment of diastolic function & filling pressures
 Techniques of Right ventricular assessment
 Role of USG in Fluid assessment

Tea Break

Assessment of Left ventricular systolic function
 Assessment of Left ventricular systolic function- stroke volume measurement
 Airway Ultrasound

Workstation 1**Lunch**

Integration of USG in your routine clinical practice	Case based learning, USG protocols
---	------------------------------------

Workstation 2**Post- Test / Feedback and Valedictory**