

A colorful illustration featuring a girl on the left with long dark hair in a bun, wearing a pink dress with yellow polka dots and yellow shoes, playing a yellow acoustic guitar. On the right, a boy wearing a blue bucket hat, a light green striped t-shirt, and blue shorts is jumping joyfully with his arms raised. The background is white with a large, light blue cloud-like shape in the center containing the text. There are also small grey circles, pink and yellow dots, and white crosses scattered around. A kite is partially visible on the far right edge.

PAEDIATRIC PHYSIOTHERAPY SERVICES

We believe every child is a unique gift and with the appropriate intervention, their package will unwrap eventually

SERVICES PROVIDED

NEUROLOGICAL

- ❑ SPINA BIFIDA
- ❑ POST STROKE REHAB
- ❑ ERB'S PALSY
- ❑ BELL'S PALSY

PAEDIATRICS

- ❑ DEVELOPMENTAL DELAY
- ❑ AUSTIM
- ❑ CEREBRAL PALSY
- ❑ DOWN'S SYNDROME



CARDIOLOGY & RESPIRATORY

- ❑ BRONCHITIS
- ❑ PNEUMONIA
- ❑ POST-CABG
- ❑ PULMONARY REHAB
- ❑ CARDIAC REHAB

MUSCULOSKELETAL

- ❑ CTEV
- ❑ TORTICOLLIS
- ❑ POST- INJURIES REHABILITATION
- ❑ POST- FRACTURE REHABILITATION

Early Intervention

Sensory Integration

Neuro Development
Therapy(NDT)

Intensive Model of Therapy

Balance and co-ordination
Training

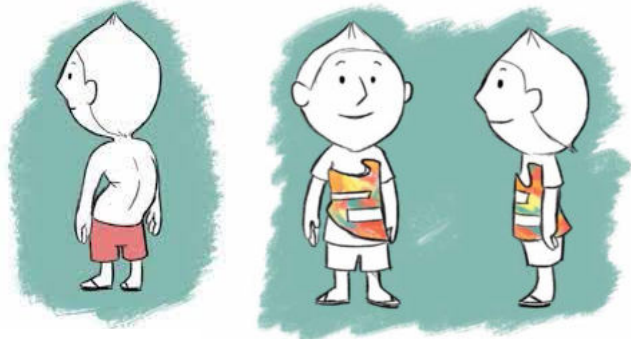
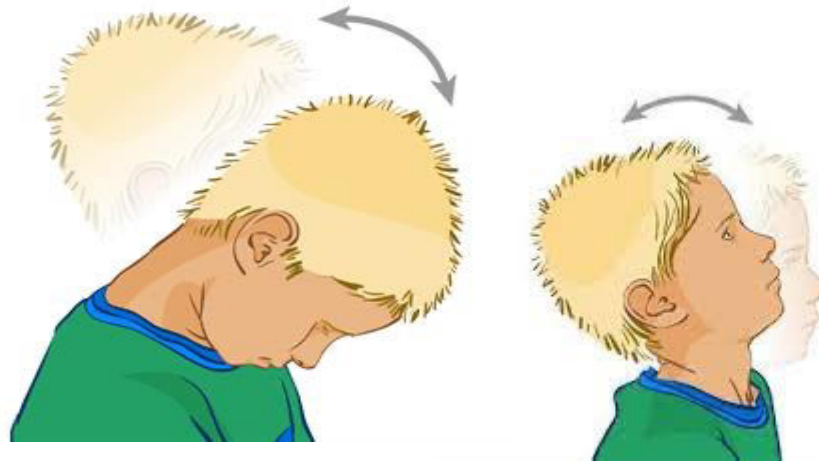
Sensory Re-education

Treadmill Training

Cardiac Rehabilitation

SERVICES PROVIDED





Electrical Stimulation

Posture Correction

Facial Exercises

Pain And Palliative care

Gait Training

Post-Operative Care

Mirror Biofeedback

Home- program exercises