

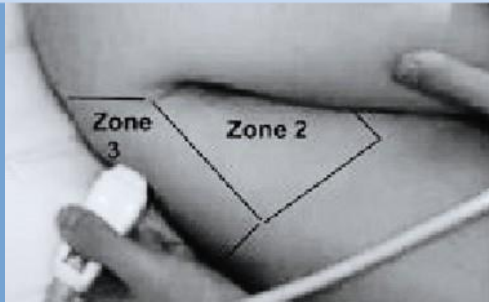
# BESTriCC

BEDSIDE SONOGRAPHY TRAINING IN  
CRITICAL CARE

# B E D S I D E ULTRASON C RITICAL ARE



G  
R  
A  
P  
H  
Y



The Department of Critical Care Medicine, St. John's Medical College Hospital invites you all to a 2 day comprehensive critical care Ultrasonography workshop.

Come be a part of the paradigm shift that has revolutionized assessment, diagnosis & management of the critically ill using ultrasonography.

## DATE & VENUE

28<sup>TH</sup> & 29<sup>TH</sup> JULY 2023

8:30AM – 5.00PM

DEPT OF CRITICAL CARE MEDICINE.  
FIRST FLOOR, SILVER JUBILEE BLOCK  
ST. JOHN'S MEDICAL COLLEGE  
HOSPITAL, SARJAPURA ROAD  
BENGALURU

# WORKSHOP HIGHLIGHTS

- Holistic learning of USG/ECHO to aid with day to day management of critically ill
- Bedside teaching by trained faculty with hands on training
  - Interactive case scenarios

## REGISTRATION DETAILS

**REGISTRATION FEE : RS 5000 + 18% GST**

**REGISTRATIONS LIMITED TO 30 PARTICIPANTS**

**FOR ONLINE REGISTRATION & TRANSACTION DETAILS**

Kindly visit : [https://www.stjohns.in/about\\_us/Events](https://www.stjohns.in/about_us/Events)

**LAST DATE OF REGISTRATION: 22<sup>nd</sup> July 2023**

**APPLIED FOR 4 KMC CME CREDIT HOURS**

Accommodations available at ANNEXE III (Kindly pay directly at ANNEXE III)  
Tariff per day: Non AC Single Room- 750/- | Non AC Double Room- 1120/-

### CONTACT:

Mrs. Veena Kumari (ICU Secretary)  
1st Floor ICU, Silver jubilee Block  
St. John's Hospital, Sarjapur Road  
Bengaluru- 560 034  
Ph: 080- 2206 5334

Email: [ccmstjohns@gmail.com](mailto:ccmstjohns@gmail.com)



**BESTriCC - DAY 1 (28/07/2023)****TOPICS**

Basic principles of USG: Understanding your machine- Knobs & Probes  
 Introduction to Echocardiography- Basic views  
 Venous USG at point of care, VexUS  
 FAST/eFAST

**Tea Break**

Principles of Lung USG

**Workstation 1****Lunch****USG in Respiratory disease and Neurocritical Care**

Alveolar diseases	USG in Pneumonia, ARDS & Pulmonary edema
Pleural & Airway diseases	Pleural effusion, Pneumothorax, COPD & Asthma
How to get a window to brain?	Transcranial doppler
Optic nerve ultrasound	Eye a window to CNS

**Tea Break****Workstation 2****BESTriCC - DAY 2 (29/07/2023)****TOPICS****Echocardiography**

Doppler- Basic principles  
 Assessment of diastolic function & filling pressures  
 Techniques of Right ventricular assessment  
 Role of USG in Fluid assessment

**Tea Break**

Assessment of Left ventricular systolic function  
 Assessment of Left ventricular systolic function- stroke volume measurement  
 How to assess diaphragmatic dysfunction

**Workstation 1****Lunch**

<b>Integration of USG in your routine clinical practice</b>	Case based learning, USG protocols
---	------------------------------------

**Workstation 2****Post- Test / Feedback and Valedictory**